

# BEYOND THE THRESHOLD

## Entry Sequences in Three Distinct Cape Cod Homes

For John DaSilva, FAIA, Design Principal at integrated architecture and construction firm Polhemus Savery DaSilva (PSD), the experience of entering a home is never merely about crossing a threshold. It's an invitation to consider a home's story—one that begins before the front door and unfolds in a sequence of architecture, light, and movement. In three distinct Cape Cod residences, the journey inward is designed with intention, layering formal tradition with the laid-back allure of coastal living.

### Coastal Considerations

Along the Cape, where the sea shapes daily rhythms, connection to the outdoors is paramount. "A view through the house to the water is one of the most common requests," says DaSilva. And these homes deliver, using terraces, decks, and meandering outdoor paths to ease the transition from street to shoreline. "At Sandy Bluff, there's a large terrace beyond the dining room, with an outdoor kitchen and infinity-edge pool. Riptide has a series of stepped yards. St. Peter's Cottage has a deck and terrace sequence. It's all part of that journey."

Even in an era of side entries and garage arrivals, DaSilva defends the traditional front entry. "It's very important, even if the front door isn't used often. There are conventions we all understand—almost as if a part of our DNA—that tell us what feels like home. A formal front entry is part of that."



Photography Brian Vanden Brink



## SANDY BLUFF

At Sandy Bluff, a covered porch spans across a facade rooted in American Georgian precedent—a poised but complex exterior with overlapping symmetries. "Some parts of the porch are just for circulation, others are usable spaces," DaSilva notes of the partially deep, partially shallow porch. The entry door is highlighted by an overscaled pediment and fan light, providing a focal point to the entire composition.

A renovation layered over an existing footprint, the home retains its original wings while introducing a bold central mass. Inside, the front door opens to a generous hall from which rooms radiate. "It's not a long sequence; it's more of a spatial node," he says. "But it still offers choices: go right to the family room, left to a pantry or powder room, or straight into dining."





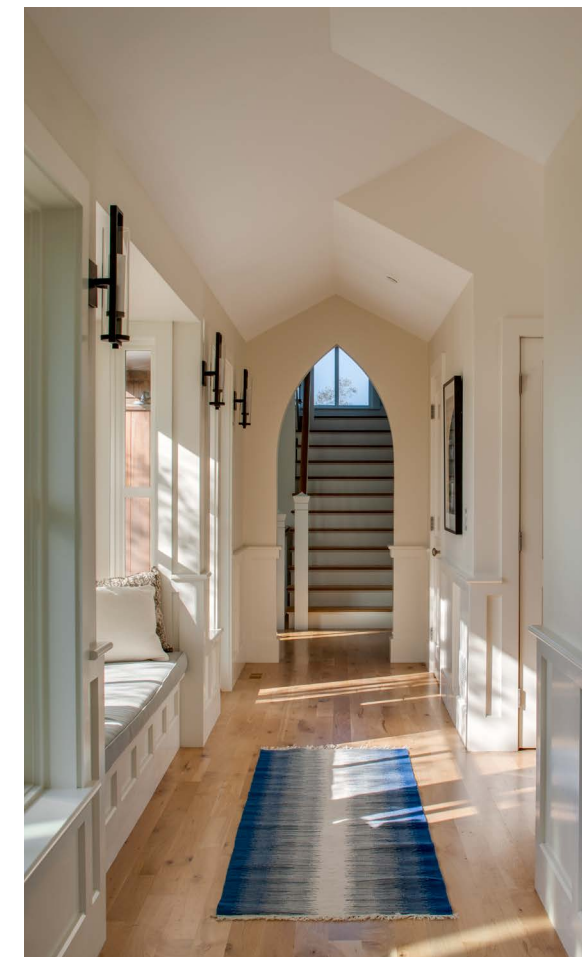


## ST. PETER'S COTTAGE

The dynamic sense of movement of St. Peter's Cottage draws visitors in and gently guides them through playfully casual, sundrenched spaces. "A modestly sized entry porch is expanded symbolically through material and detail changes," says DaSilva.

Inside, space opens with an immediate sense of connection to the outdoors. A bay window and bench seat frame lush garden views, inviting visitors to sit and stay awhile. "There's a feeling of revelation and surprise as you move through," he says.

"THERE ARE CONVENTIONS WE ALL  
UNDERSTAND—ALMOST AS IF A PART OF OUR  
DNA—THAT TELL US WHAT FEELS LIKE HOME."  
- JOHN DASILVA







"WE WANT TO CREATE HOUSES THAT MAKE PEOPLE SMILE," DASILVA SAYS, "AND THAT FAMILIES MISS WHEN THEY'RE AWAY."

## RIPTIDE

With a touch of drama, Riptide elevates entry and circulation into procession. Another abstracted fan light announces entry from the street and from across a long, sweeping lawn. Building curiosity and suspense, the porch narrows down to the off-center front door leading to a low-ceilinged vestibule. The stair hall beyond, followed by an interior arcade framing ocean views, is at once grand and casual. "A mesmerizing path from public to private realms is the result," says DaSilva.

## Crafting the Arrival

Throughout their work, Polhemus Savery DaSilva imbues entryways with personality. "They're usually historically inspired, but not historical replicas," he says. "Fan lights, brackets, arches, columns—they're enlarged, abstracted, and flattened."

"We want to create houses that make people smile," DaSilva says, "and that families miss when they're away." 🏠